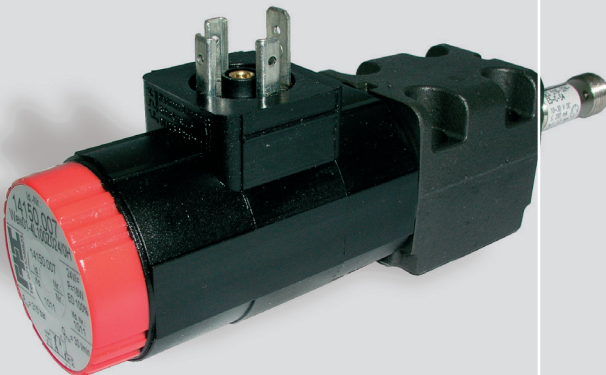


## 4/2, 4/3 Directional Control Valve, NG 4 ISO 4401, monitored Technical Data Sheet



- directly controlled piston valve
- compact design
- short switching time
- low internal leakage
- pressure sealed oli-immersed solenoids for direct or alternating current
- easy service: solenoid can be changed without leakage while the valve is under system pressure
- solenoids can be rotated 3 x 90°, allowing alternative connector positions
- only one plug, even with 4/3 directional control valves
- port connection pattern according to ISO 4401

## Technical Data

### General

Type of valve	piston valve
Operation	electric
Mounting	4x M5x25 DIN912
Connection of ports	mounting plate
Mounting positions	mountable in any positions
Ambient temperature	-5 to +50 °C
Mass valve	0,7 kg with single acting solenoid 0,8 kg with double acting solenoid

### Hydraulic

Operation pressure P,A,B	max. 315 bar
Operation pressure T	max. 150 bar
Hydraulic oil temperature	-10 to +70 °C
Viscosity range	10 to 300 mm <sup>2</sup> /s
Max. flow	30 l/min

### Electric

Voltage (±10%)	24 V DC	230V, 50Hz AC
Switching time on*	17 ms	25 ms
Switching time off**	17 ms	25 ms
Power consumption P20	20 W	
Start up peak P20		64 VA
Duty factor	100%	100%
Protection system	IP65	IP65
DIN 40450		

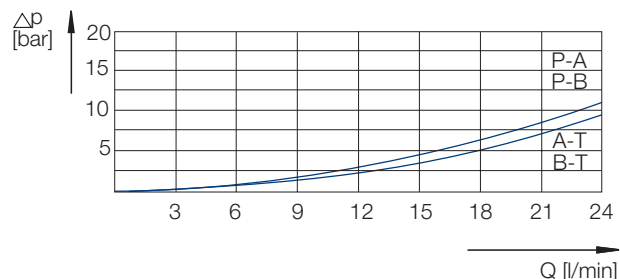
\* at 24V DC ± 5%

\*\* at terminal voltage = -50V at free circuit

### Options

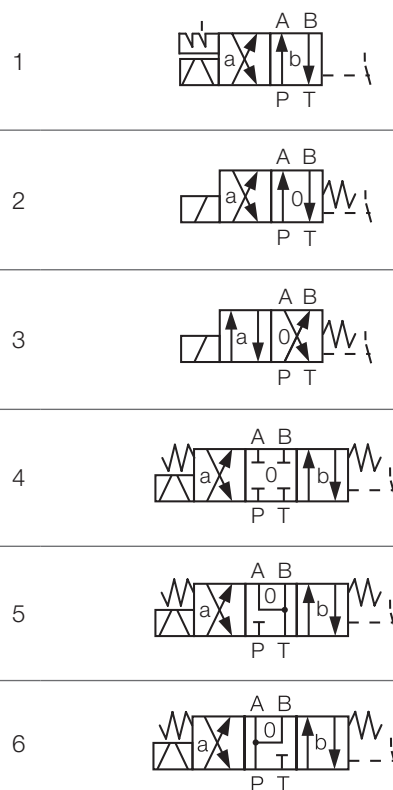
- alternative voltages
- alternative symbols - Datenblatt: 14607-DSH
- alternative plugs
- alternative solenoid position
- switch position „0“ or „b“ monitoring

### Characteristic Curve

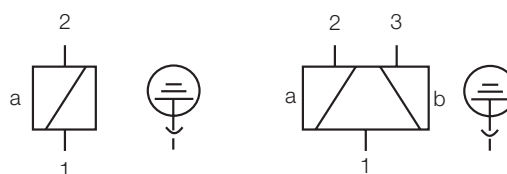


hydraulic oil 35 mm<sup>2</sup>/s, 50°C

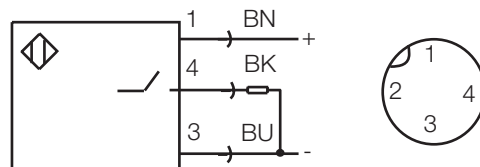
## Symbol



## Electrical Connection



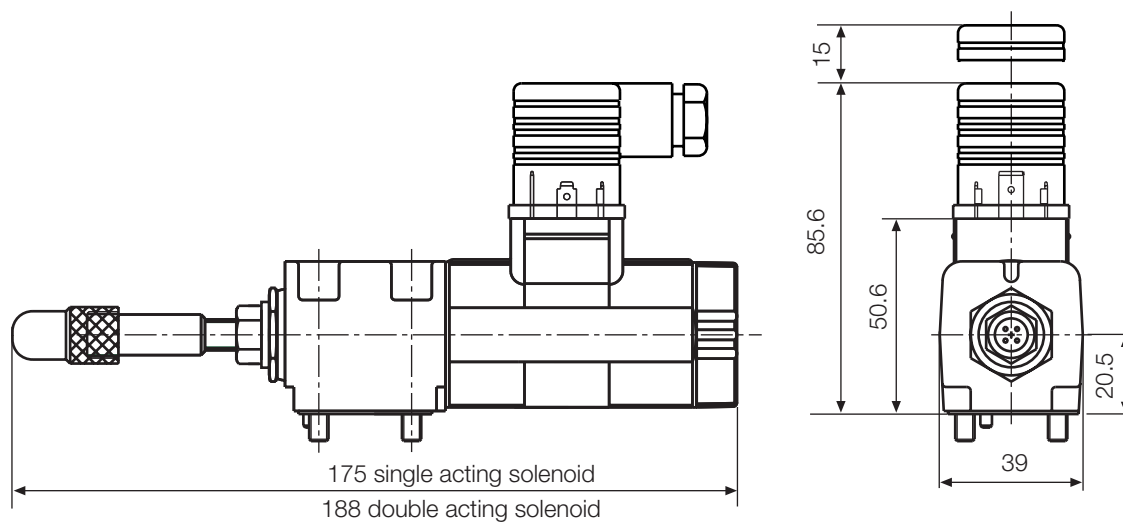
## Circuit Diagram Proximity Switch



The position of the valve piston is monitored by proximity switch. Proximity switch is mounted on valve body side for monitoring switch position „a“ and on solenoid side for monitoring switching position „b“ (option).

Connection: plug M12 x 1 (pins) , A-code

## Dimensional Drawing



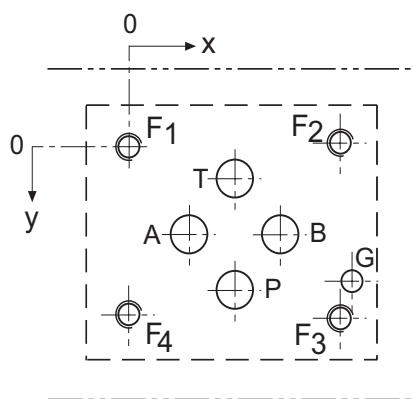
Fastening screws are included.

Plug is not included.

The position of the M12 connector is not defined it depends on the adjustment.

dimensions in mm

## Port Connection Pattern NG 4 ISO 4401



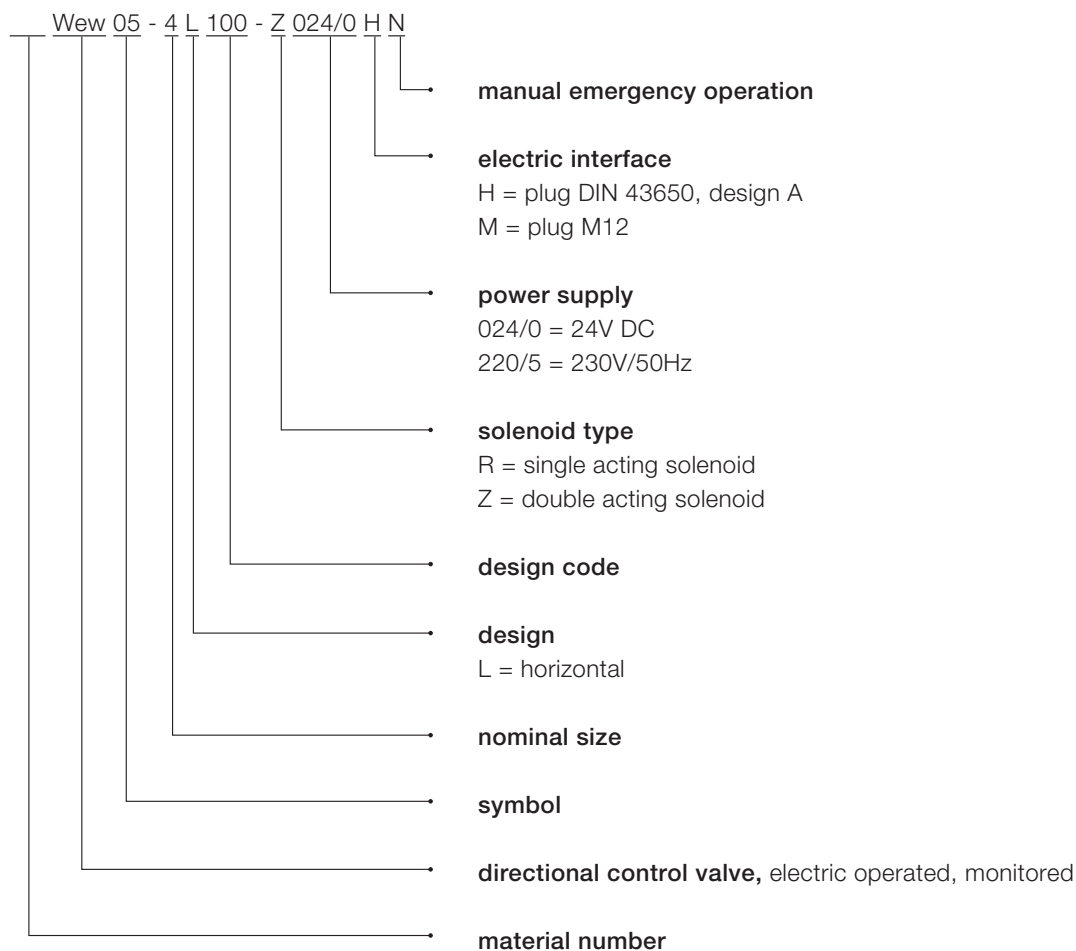
	P	A	T	B	F1	F2	F3	F4	G
Ø max [mm]	4.5	4.5	4.5	4.5	-	-	-	-	3.4
x [mm]	12	4.3	12	19.7	0	24	24	0	26.5
y [mm]	20.25	11.25	2.25	11.25	0	-0.75	23.25	22.5	17.75

F: M5, thread depth min. 1.5 x Ø

G: bore hole depth min. 1.5 x Ø

Various single and multiple mounting plates are available.

## Type Code



This is a translated document. Original language: german.  
Legally binding language version of document: german.

Voith Turbo H + L Hydraulic GmbH & Co. KG  
Schuckertstraße 15  
71277 Rutesheim, Germany  
Tel. +49 7152 992 3  
Fax +49 7152 992 400  
sales-rut@voith.com  
[www.voith.com/hydraulic-systems](http://www.voith.com/hydraulic-systems)



**VOITH**  
Engineered Reliability